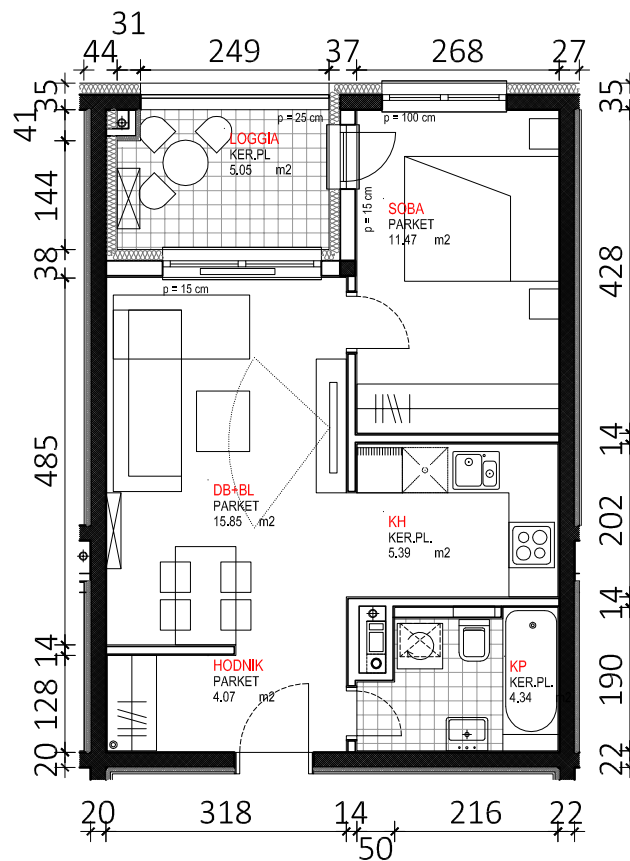
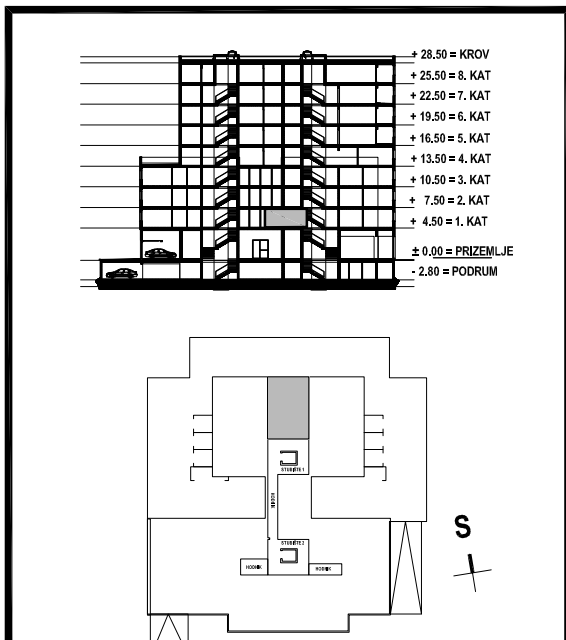


1.KAT			
STAN B1	netto-površina (m ²)	k	netto-obr.površina (m ²)
Hodnik	4,07	1,00	4,07
KP	4,34	1,00	4,34
Soba	11,47	1,00	11,47
DB+BL	15,85	1,00	15,85
KH	5,39	1,00	5,39
UKUPNO	41,12		41,12
Loggia	5,05	0,75	3,79
STAN B1 UKUPNO	46,17		44,91



STAN B1



B1